



R&E

ROBOTICS & END OF LINE

FLEX LEGION TURNTABLE PALLET WRAPPER



Value leader in a cost effective, rugged, and reliable design

The Flex Legion is the value leader in semi-automatic turntable stretch wrapping with all the features you need to quickly, efficiently, and economically stretch wrap pallet loads.

Built to last and be easily maintained, the Flex Legion features a robust Insta-Thread Carriage film delivery system, a structural steel framework that allows the machine to be transported from the front or back, AC motors with VFD controls, and automatic height photo-eye sensors that improve the precision application of pre-programmed wraps to maximize load containment and film yield.

FEATURES AND BENEFITS

- Load with a pallet jack, electric walkie, or forklift
- 4" Allen-Bradley, HD touch screen HMI
- Quick adjust dials for hassle-free adjustments
- Premium efficiency AC motors with 15 RPM variable speed soft start
- Revo-Logic technology for precise film application with maximum load containment and film yield
- 4,000 lb. maximum load capacity utilizing Orion's class-leading structural base
- Film saving 200% powered film pre-stretch (80GA film or thinner)
- Automatic film payout
- Max load height 80" as standard, 110" optional
- 60" diameter turntable for loads up to 55" x 55"

INSTA-THREAD CARRIAGE

At the heart of the machine, the Flex Legion is equipped with class-leading film carriage technology, the Insta-Thread Carriage. This carriage provides a consistent film-saving 200% pre-stretch and incorporates the same premium quality components found within the S-Carriage on other Orion Flex models. The automated film payout ensures consistent film payout regardless of load size and shape.

OPTIONS:

- Extended Mast - 110"
- Special load height photocell for dark/opaque loads
- 150% pre-stretch (above 80GA film)
- Load backstop
- Ramp

ORION FLEX LEGION TURNTABLE PALLET WRAPPER

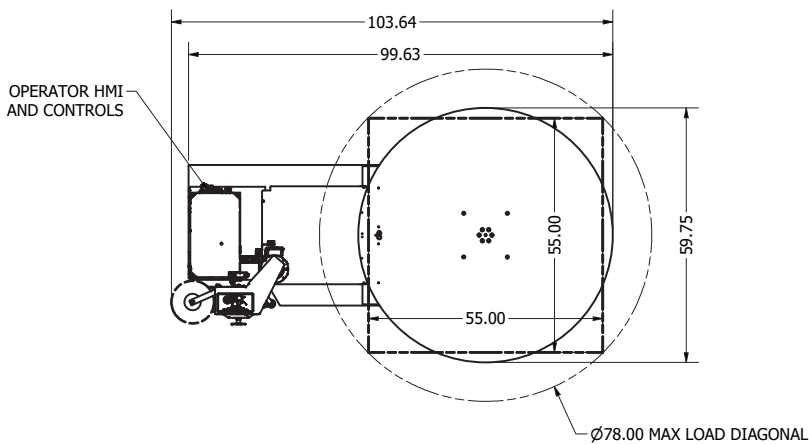
TYPICAL PRODUCT SPECIFICATIONS

| | |
|----------------|---------------------------------|
| Speed | 15 RPM |
| Display | 4" Allen Bradley HMI |
| Frame | Heavy-duty welded tubular steel |

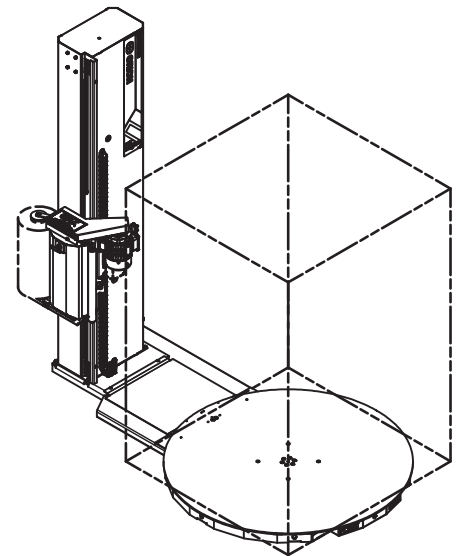
| | |
|--------------------------------|--|
| Electrical Requirements | 115/1/60, 15 Amp electrical service (Not suitable for GFIC) |
| Shipping Weight | 80" Mast: 1200 lbs. (ships as 1 pc.) 110" Mast: 1300 lbs. (ships as 2 pcs.) |

CONFIGURATION

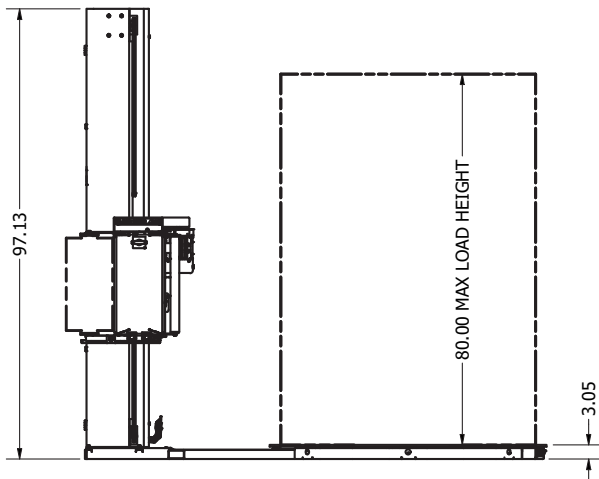
Top view



Corner View



Side view



©2025 ProMach Inc. ProMach reserves the right to change or discontinue specifications and designs shown in this brochure without notice or recourse
Orion Flex Legion Spec Sheet

PHONE
(320) 852-7705

EMAIL
Orion@ProMachBuilt.com

WEB
OrionPackaging.com

4750 County Rd. 13 NE
Alexandria, MN 56308